

SP 344 and SP 444 22.5"

The new "on road transport" tyre range



SP 344 and SP 444 22.5"

The new "on road transport" tyre range



Goodyear Luxembourg
Tires S.A.
Av. Gordon Smith
L-7750 Colmar-Berg

Telephone:
(352) 8199- 1
Telefax
(352) 8199 2008

Dunlop regularly launches new products and sizes.
Contact your dealer for latest information.

Your Dunlop Dealer:





SP 344 AND SP444 22.5"

The new "on road transport" tyre range

Dunlop's new range of steer (SP344) and drive (SP444) tyres in 22.5" sizes have been specifically developed for a multitude of applications, from delivery service, short and regional haul distribution operations to long haul transport.

Dunlop's "Feel the road" philosophy – focusing on driver benefits in all tyre ranges - has been applied to develop the new SP344 and SP444 truck tyres.

Drivers benefit through good handling, stability, excellent traction and braking on wet and snow.

Fleets benefit through superb mileage, reduced cost per km, wide application range and damage resistant, durable carcasses – for enhanced transport efficiency.

The combination of latest technology materials, dedicated tread pattern features and a robust carcass result in excellent mileage performance and even wear type combined to good traction and braking on wet surfaces.

All season capabilities are assured through the superb winter traction performances of the drive design SP444.



The use of latest technology carcass and belt materials, combined to the dedicated tread compound and the optimized tyre geometry, result in enhanced tyre durability, damage resistance and consequently retreadability.

SP 444

FEATURES	BENEFITS
Wide, directional tread, centerline rib	High mileage, even wear, low rolling resistance
Highly bladed pattern, 3D BIS blading	Optimum traction and braking on wet, good winter performances
Specific directional groove tapers and blades	Even wear pattern, enhanced damage resistance
New "teardrop:" blade bottom	Improves robustness and durability



Size line up and technical details:

SIZE	Load/Speed Index	Max. Axle Load Single (kg)	Max. Axle Load Dual (kg)	Max. Inflation (bar)	Max. Outside Diameter (mm)	Max. Section Width (mm)	Static Loaded Radius (mm)	Rolling Circumf. (mm)	Min. Dual Spacing (mm)	Rec. Rim Width
315/70R22.5	154/150 L (152/148 M)	7500	13400	9.00	1032	318	468	3090	351	9"
295/80R22.5	152/148 M)	7100	12600	8.50	1062	310	486	3180	326	9"
315/80R22.5	156/150 L (154/150 M)	8000	13400	8.50	1096	318	500	3280	351	9"
315/60R22.5*	152/148 L	7100	12600	9	996	326	445	2880	351	9.75"
295/60R22.5*	150/147 K (149/146 L)	6700	12300	9	940	304	435	2810	326	9"
385/65R22.5**	160 K (158 L)	9000		9	1092	405	496	3250		11.75"
385/55R22.5**	160 K (158 L)	9000		9	1012	401	464	3020		11.75"

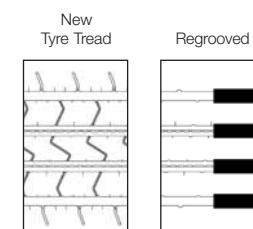
* In preparation.
** In preparation SP 344 only.

SP 344

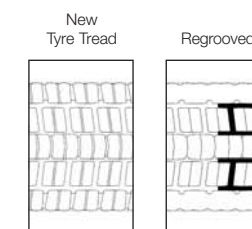
FEATURES	BENEFITS
Wide, 5 rib tread pattern	Excellent mileage, good handling and low noise
Solid shoulders	High damage resistance
Groove edge blading	Even wear pattern, improved braking on wet surfaces
Flexomatic blades	Improved braking on wet and high mileage
Stone penetration protectors	Enhanced damage resistance



Regrooving SP 344:



Regrooving SP 444:



Regrooving information:
Regrooving depth: 3 mm
Regrooving width: 6-8 mm
Regrooving must be done by professionals.
Non-professional regrooving damages tyres and causes premature tyre removal.

